

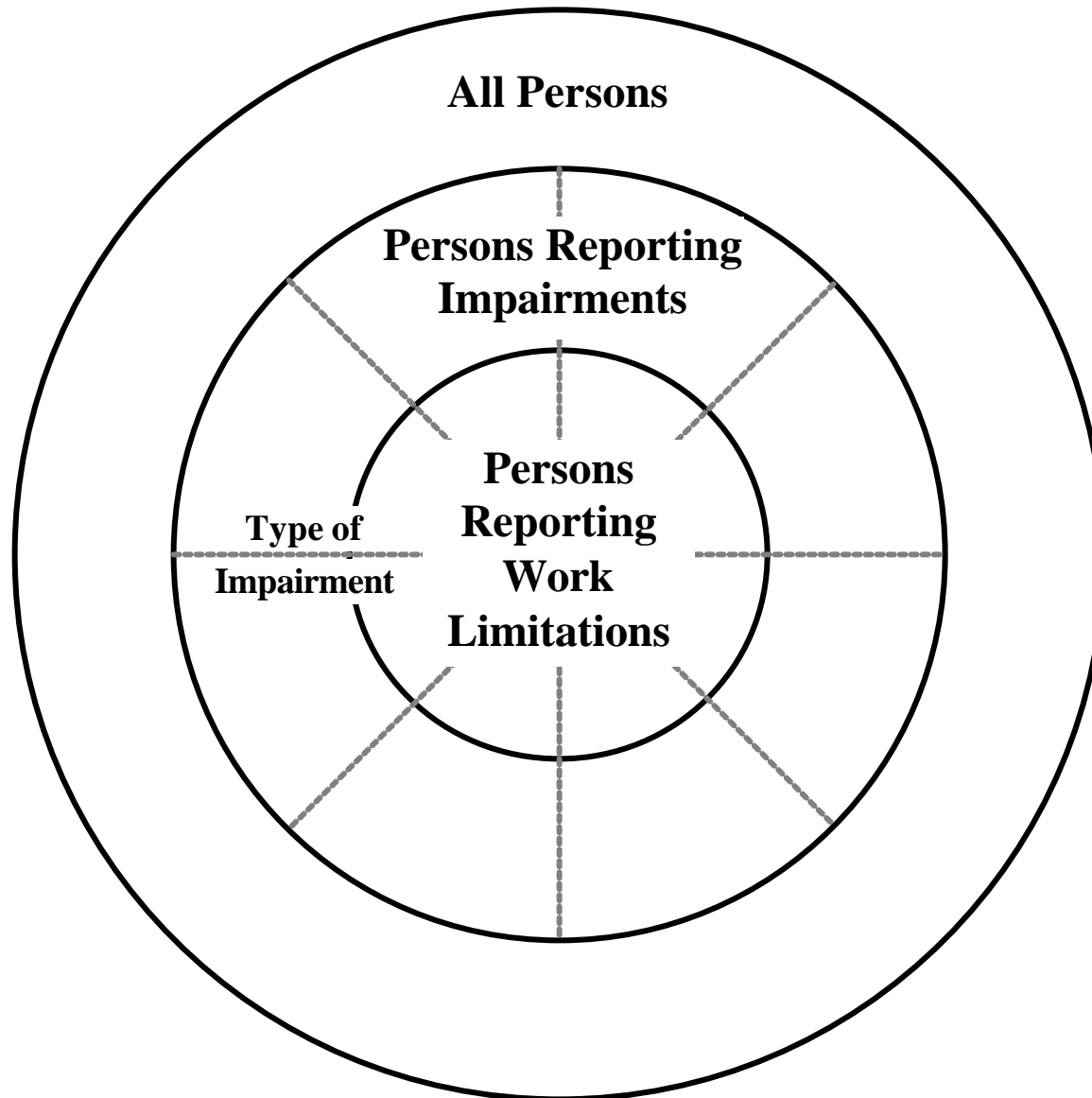
A Brief Discussion of the Employment of People with Disabilities and the Definition of Disabilities

Richard V. Burkhauser
Andrew J. Houtenville

Cornell University

*Rehabilitation Research and Training Center
For Economic Research on Employment Policy For
Persons with Disabilities*

Conceptualization of Disability



Prevalence and Work Limitation – Levels

Table 1. Percentage Reporting Various Impairments and the Percentage Reporting Work Limitation among Non-Institutionalized Working-Age (Aged 25-61) Civilians who Received Check List 2, Pooled over 1983 through 1996.

Impairment Category	Prevalence Rate	Percentage Reporting Work Limitation
Blind in Both Eyes.....	0.15	69.0
Other Visual Impairments.....	1.83	36.2
Deaf in Both Ears.....	0.37	38.0
Other Hearing Impairments.....	7.49	23.4
Sensation Impairments.....	0.35	26.1
Stammering and Stuttering.....	0.42	33.3
Other Speech Impairments.....	0.26	64.9
Paraplegia, Hemiplegia, or Quadriplegia.	0.11	90.2
Paraparesis or Hemiparesis.....	0.05	88.5
Cerebral Palsy.....	0.09	74.5
Mental Retardation.....	0.29	90.2

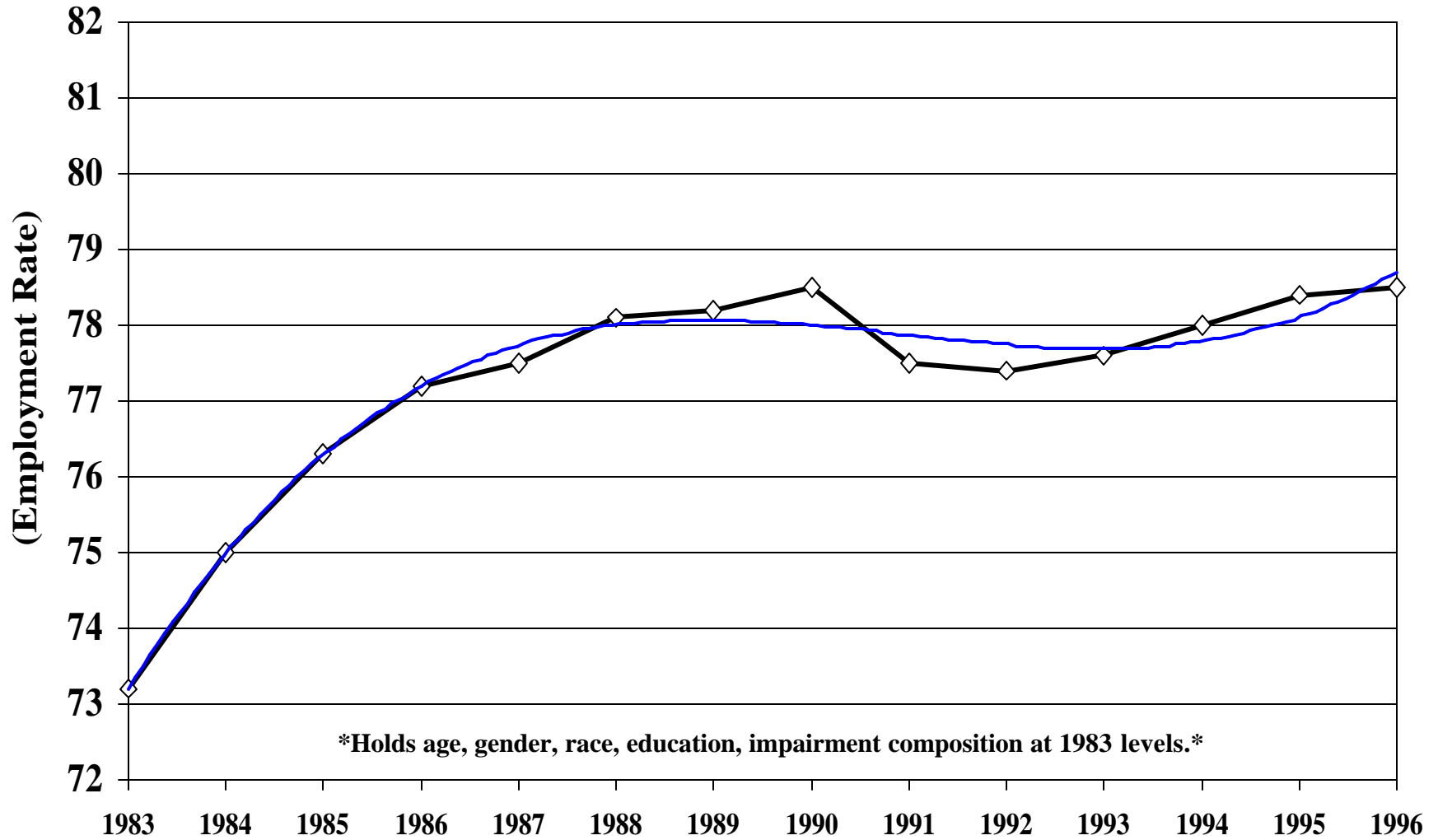
Employment – Level

Table 2. Employment Rates among Non-Institutionalized Working-Age (Aged 25-61) Civilians Reporting Various Impairments who Answered Check List 2, Pooled over 1983-96.

Impairment Category	All Persons	Reporting No Work Limitation	Reporting Work Limitation	Ratio
Blind in Both Eyes.....	39.1	81.1	20.3	3.98
Other Visual Impairments.....	63.0	80.9	31.6	2.56
Deaf in Both Ears.....	68.0	84.6	40.8	2.08
Other Hearing Impairments.....	73.6	83.9	39.6	2.12
Sensation Impairments.....	73.1	82.7	45.6	1.81
Stammering and Stuttering.....	65.4	86.3	23.7	3.64
Other Speech Impairments.....	44.0	71.6	29.1	2.46
Paraplegia, Hemiplegia, or Quadriplegia.	25.1	72.4	20.0	3.62
Paraparesis or Hemiparesis.....	31.2	66.7	26.6	2.51
Cerebral Palsy.....	42.4	71.6	32.4	2.21
Mental Retardation.....	30.6	51.6	28.4	1.82

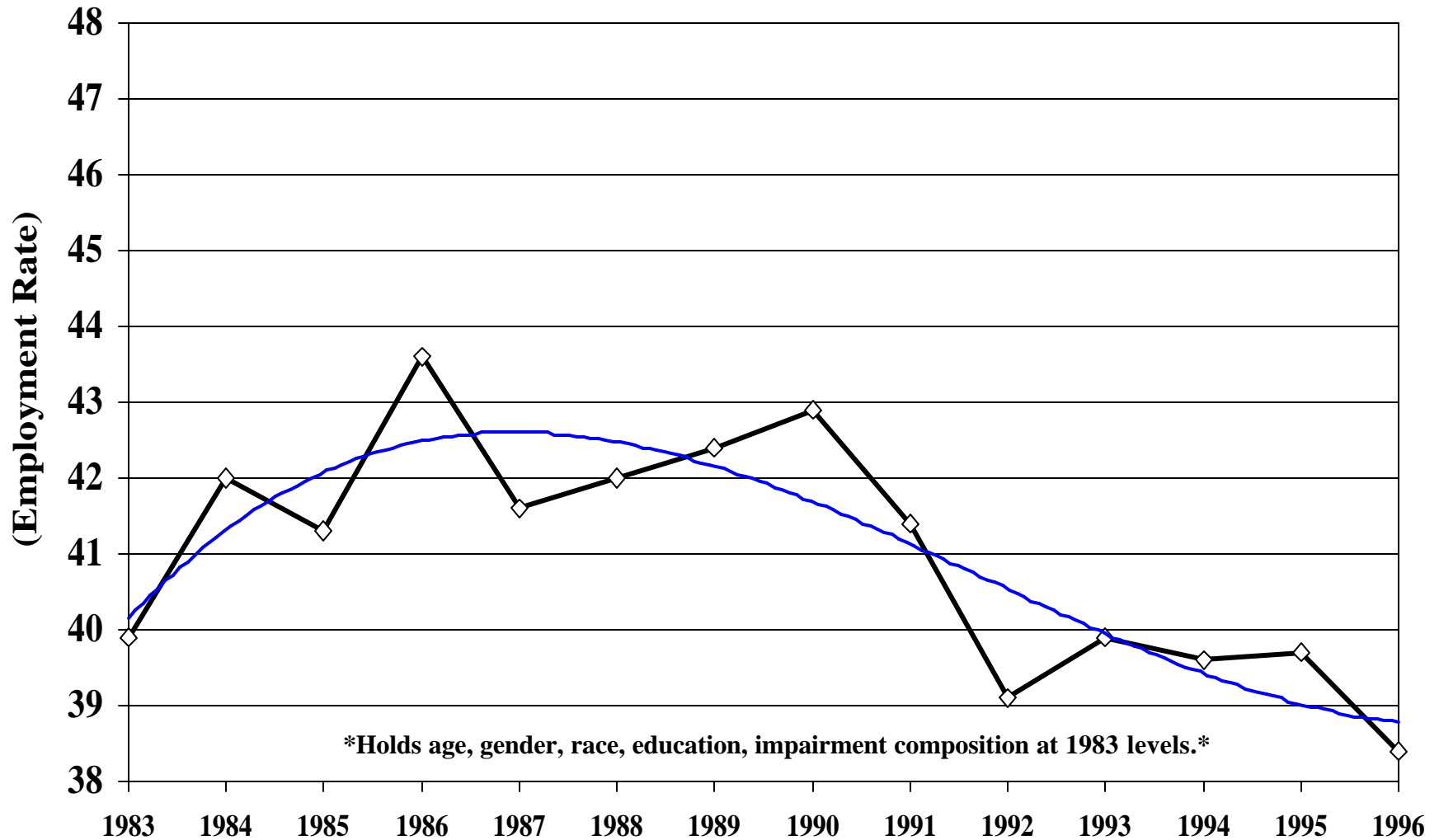
Employment – Trend – All Persons

Figure 2. Employment Rate among Non-Institutionalized Working-Age (Aged 25-61) Civilians, 1983 through 1996.



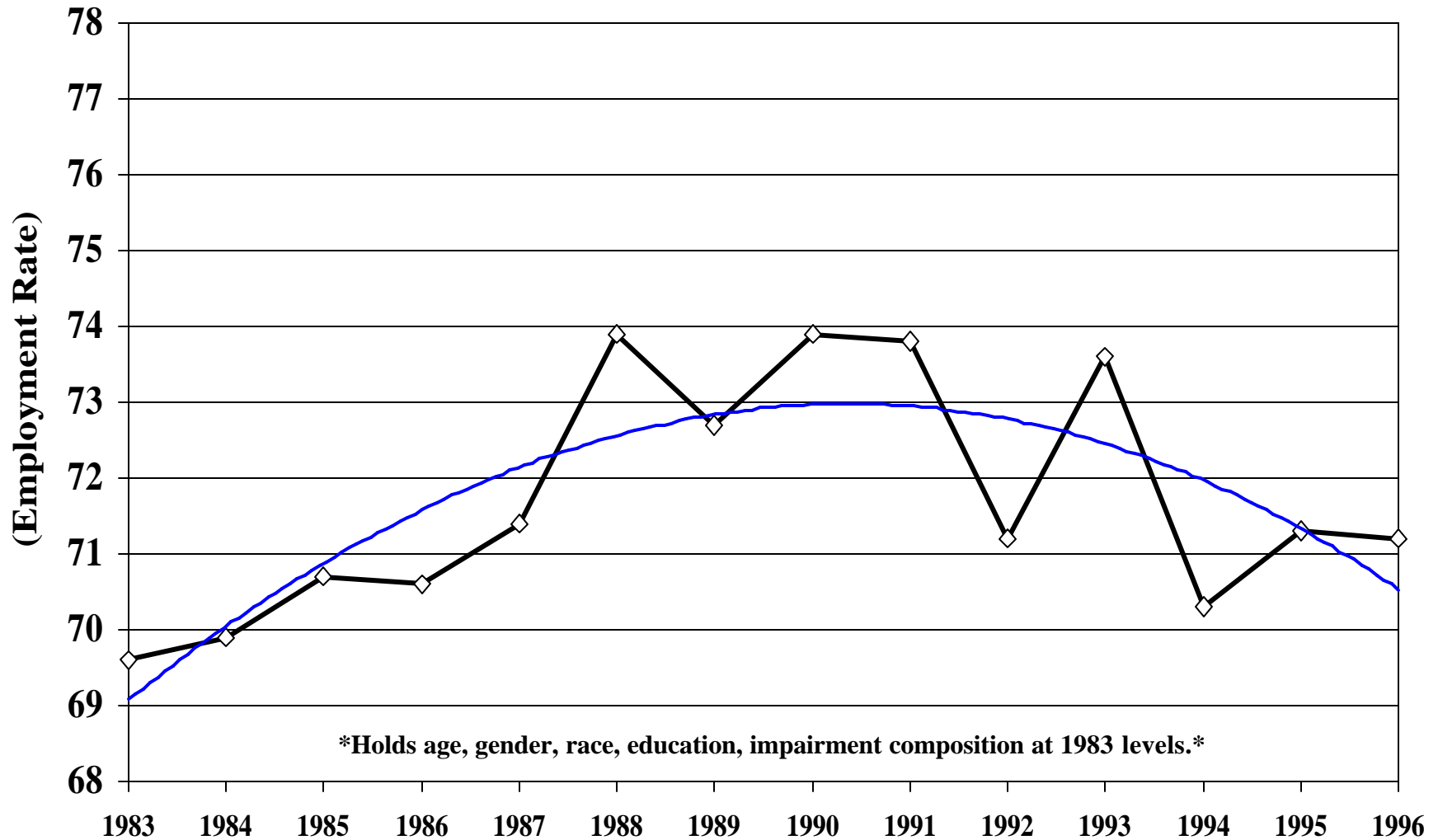
Persons who Report Work Limitations

Figure 3. Employment Rate among Non-Institutionalized Working-Age (Aged 25-61) Civilians who Report Work Limitations, 1983 through 1996.



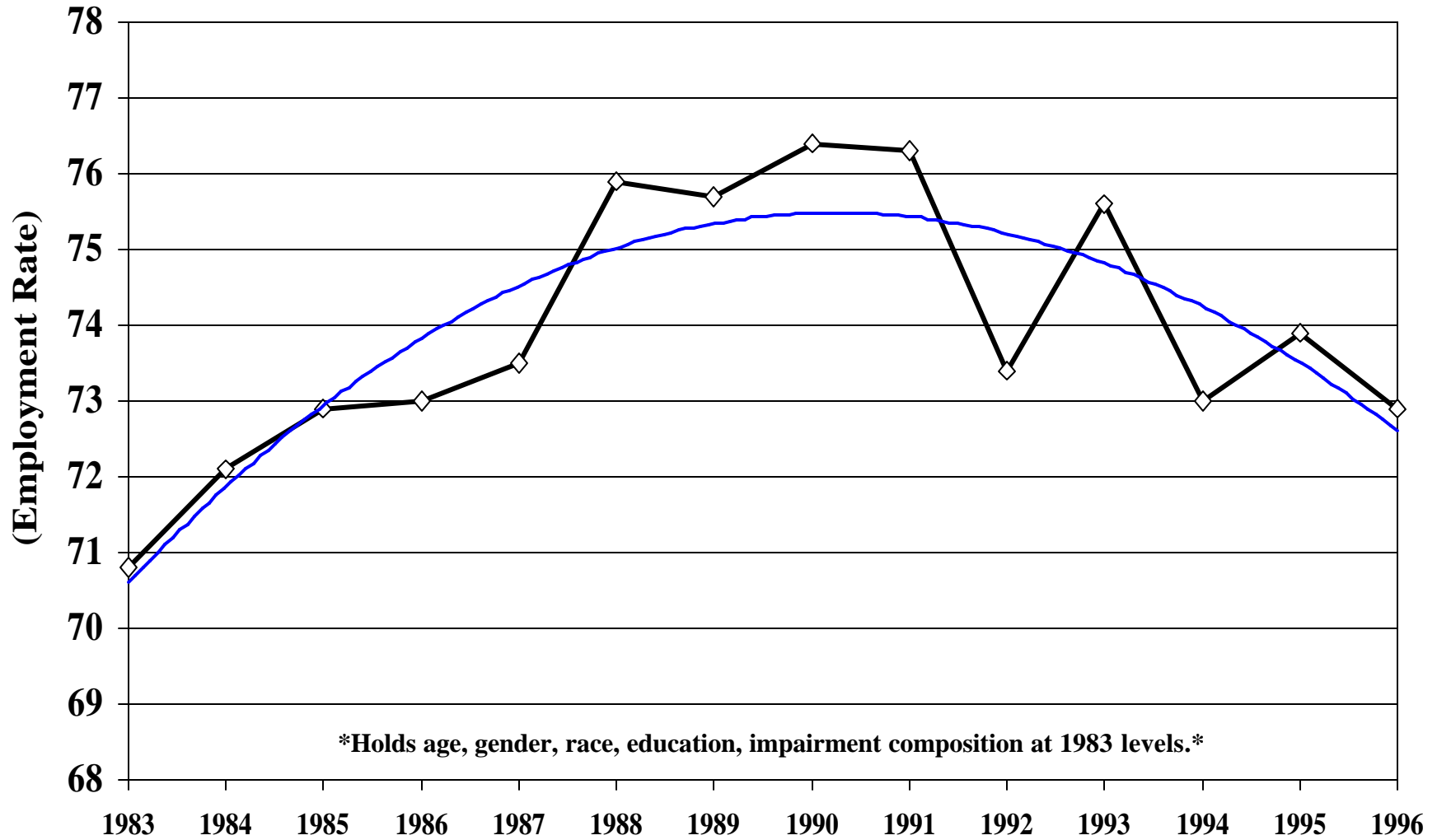
Persons who Report Various Impairments

Figure 4. Employment Rate among Non-Institutionalized Working-Age (Aged 25-61) Civilians who Report Various Impairments who Answered Check List 2, 1983 through 1996.



Persons who Report the “Least Work Limiting” Impairments

Figure 5. Employment Rate among Non-Institutionalized Working-Age (Aged 25-61) Civilians who Report the “Least Work Limiting” Impairments who Answered Check List 2, 1983-1996.



Persons with Work Limitations (CPS, NHIS)

Figure 6. Employment Rate among Non-Institutionalized Working-Age (Aged 25-61) Civilians who Report Various Impairments, CPS and NHIS, 1980 through 1999.

